

How to read an older, analogue meter

Electricity Meters

Digital single meter

Looks like this:



How to read:

Write down the five numbers as they appear. **Ignore the red one.**

Digital dual meter

Looks like this:



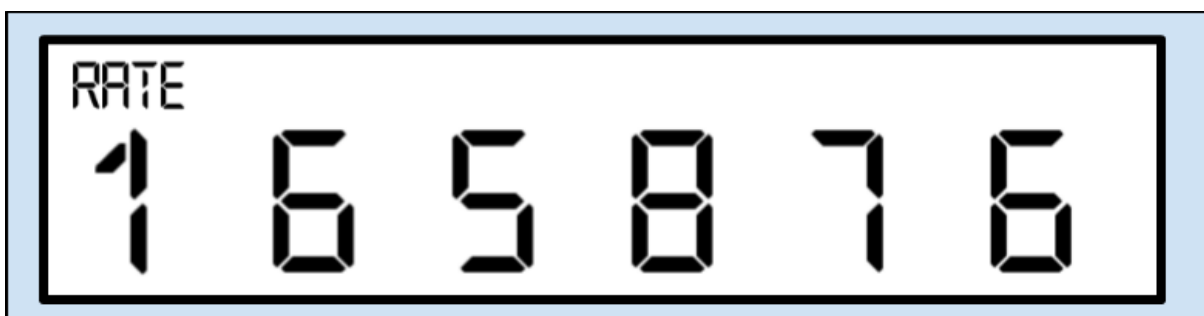
This is for those of you on two energy rates for different times of the day. The cheaper one is on top.

How to read:

Write down the five numbers as they appear, **ignoring the red ones.**

Digital dual meter (single display)

Looks like this:



Some dual meters have a single display where you might have to press a button to view each rate.

How to read:

1. Write down the numbers as they appear.
2. Press the button to see the next reading, then write that down too.

Dial meter

Looks like this:



Here you'll see five dials, each with numbers 0 to 9. There may be a sixth dial on the right, sometimes in red, or with 1/10 next to it – ignore this.

How to read:

1. Write down the numbers the pointer has just passed, from left to right.
2. If the pointer lies exactly on any number, underline it (in the above example, you would underline the 4).
3. Now, look at your five numbers. For any that are underlined, look at the number following it – if it's between 9 and 0, reduce your underlined number by one. The above example would therefore be 1 3 9 7 0.

Gas

Like electricity, there are a few different types of gas meter, but they're all fairly simple to read.

Digital imperial meter

Looks like this:

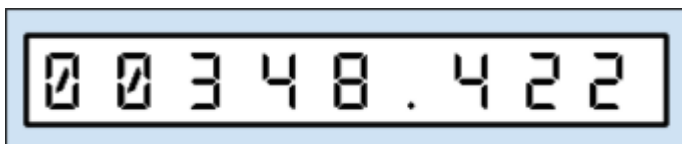


How to read:

Write down the first four numbers as they appear. **Ignore the red ones.**

Digital metric meter

Looks like this:

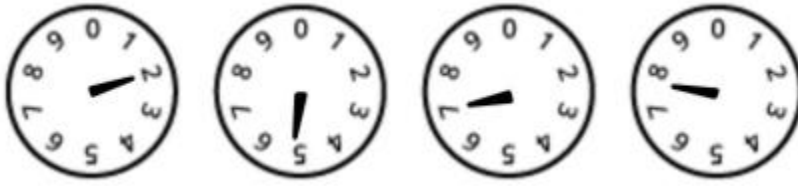


How to read:

Write down the first five numbers as they appear – **ignore the numbers after the decimal point** (sometimes in red).

Dial meter

Looks like this:



There might be more than four dials, you only need to read the bottom four.

How to read:

Write down the numbers closest to the pointer, as they appear. If it's between numbers, put the lower number, but if it's between 9 and 0, write 9.

How to read a first generation (SMETS1) Secure™ Smart Meter

To take a manual meter reading on a standard electricity tariff:

- Press 9 on the keypad.
- You'll see the letters "IMP R01" appear on the screen.
- Wait a moment – then eight digits will appear, followed by "kWh" towards the bottom right of the screen.
- Take the first 7 digits – this is your reading.

To take a meter reading on an Economy 7 electricity tariff:

- Press 6 on the keypad four times.
- Wait a moment – your day/peak and night/ off-peak readings will show up on the screen one after the other, starting with off-peak.
- For your off-peak reading, you'll see "IMP R01" onscreen. A second later, you'll see your meter reading: eight digits, with "kWh" towards the bottom right of the screen.
- For your peak reading you'll see "IMP R02". A second later, you'll see eight digits, with "kWh" towards the bottom right of the screen. You'll only need to take the first 7 digits when taking each of these readings (i.e. nothing after the decimal place).

For a smart gas meter, do the following:

- Press 9 on the keypad.
- The word "VOLUME" will show on the screen.
- Your gas reading, in cubic metres (m³) will appear.
- Take the first five digits as your reading.

How to read a first generation (SMETS1) Non Secure Smart Meter

For the time being, here's a guide to taking manual readings from a non secure first generation (SMETS1) smart meter:

Reading your Non Secure SMETS1 smart electricity meter:

Your electricity reading will be a number followed by “KWH”. We don't need the numbers after the decimal place.

If your meter has more than one unit rate (for example, if you're on an Economy 7 tariff), you'll have to take a reading for each rate. The two readings will appear one after the other — generally followed by “R1” and “R2” (Rate 1 and Rate 2). There is no set rule as to which one is your peak rate reading and which is your offpeak. Your meter might have a sticky label indicating which is which, though.

After R1 and R2, a third reading might appear onscreen — “T”. This is the total of your peak and offpeak readings combined. You don't need to give us this one.

If your meter has A and B buttons:

1. Press the A button.
2. Keep on pressing this until you get to “TOTAL ACT IMPORT”.
3. The number shown below this is your meter reading.

If your meter has a green A and a white B button:

1. Press and hold the green A button for at least 2 seconds.
2. Press A again and again to cycle through the displays.
3. The first row of numbers you'll see is your meter reading.

If your meter has three unmarked buttons:

1. Press the middle button.
2. The number shown below “IMP” is your meter reading.

If your meter has an orange button and a blue button:

1. Press the orange button.
2. You'll see a row of numbers followed by “KWH”, this is your reading.

**If your meter has two buttons marked Reconnect and Display Select:*

1. Press the “Display” or “Display Select” button.
2. Keep pressing until it scrolls through a number followed by kWh, this is your reading.

Reading your Non Secure SMETS1 smart gas meter:

Your gas reading will be a number followed by “m3”. We don't need the numbers after the decimal place.

If your meter has A and B buttons only:

1. Press the A button.
2. Keep on pressing this until you get to “METER INDEX”.
3. The number shown below this is your meter reading.

If your meter has three square red buttons (they might be labelled A, B, and C):

1. Press the A (or left) button.
2. You'll see a row of numbers followed by m3, this is your reading.

If your meter has a left arrow, a circle and a right arrow:

1. Press the middle "circle" button.
2. The screen will show "current meter reading" at the top.
3. You'll see a row of numbers followed by m3, this is your reading.

If your meter has orange and blue arrow buttons:

1. Press the orange button.
2. You'll see a row of numbers followed by m3. This is your reading.

How to read a second generation (SMETS2) smart meter

This guide will tell you how to take a manual meter reading from the most common types of SMETS2 meters.

How to read your Aclara SMETS2 electricity Meter:

To read your Aclara electricity meter, press 'A' to wake up the screen. After this, continue to press 'A' to cycle through the different options until you see 'Total Active Import'. Once you get to this option, you should be able to see your electricity reading.



To read your Aclara gas meter, press the middle button once to wake up the screen. This should automatically reveal your gas reading.

How to read Landis and Gyr SMETS2 meters:

To read your Landis and Gyr electricity meter, press 'B' to light the screen up. You should be given the option for a meter boost - press 'A' to select 'No', and then you should be able to see your electricity reading.



If you have a two-rate (Economy 7) tariff with this meter, to get your reading:

- Press the green button until you see 'Rate 01 Act Imp' – this is your first reading
- Press the green button again until you see 'Rate 02 Act Imp' – this is your second reading

To read your Landis and Gyr Smets2 gas meter, press either 'A' or 'B' to wake up the screen. This should automatically come up with your gas reading.



How to read your EDM1 SMETS2 meters:

Your EDM1 SMETS2 electricity meter should auto-display your meter reading on the main screen (It will revert back to this screen if you do not press any buttons 1 minute).

For two rate readings:

Press the OK button. This should take you to a screen that offers billing. If you press OK here too, the readings for R1 & R2 should be available.



Your EDM gas meter should auto-display your meter readings. If the screen has gone to sleep, press the button on the right to wake up the meter screen. You should see the words 'Consumption in M³, and a number which is your meter reading. The display will automatically cycle through other screens, but this first one is your reading.



How to read your Kaifa MA120 SMETS2 Electric Meter:

This meter does not require 'waking up' and uses a default auto scroll mode, cycling through its four screens. It will cycle through to the screen with your meter reading on automatically.



How to read your Flonidan G4SZV SMETS2 gas meter:

When reading your Flonidan smart gas meter, your meter reading should be displayed automatically on the default screen. It should be a number preceded by a large 'V' and followed by 'm3'. If you have cycled off that screen, you can use the 'left' and 'centre' push buttons beneath the screen to cycle back to it.



How to read your G4 Metrix GWi smart electronic gas meter

1. Press the right-hand side button twice in quick succession to access the manual scroll sequence.
2. Windows '02' displays the meter reading



How to read your Honeywell/Elster SMETS2 Gas Meter

The reading will be on the screen, if the display has gone to sleep mode, press any button to get the reading which will be shown on the display.

