

How to read your meter:

SMETS1 *Secure*[™] first-generation smart meter

Does your smart meter have a **Secure**[™] **logo** on the front? These were some of the first smart meters we installed before March 2018. We can take automatic readings from all Secure[™] SMETS1 meter readers - even if they were installed by a different supplier. But if you need to take a manual reading, here's how:



To take a meter reading on a standard electricity tariff (Liberty 100 meter model):

1. Press 6 on the keypad.
2. You'll see the letters "IMP R01" appear on the screen.
3. Wait a moment – then eight digits will appear, followed by "kWh" towards the bottom right of the screen.

4. Take the first 7 digits – this is your reading (i.e. nothing after the decimal point).

To take meter readings on an Economy 7 electricity tariff (peak and off-peak readings):

1. Note down your peak rate as above "IMP R01", and then continue to press 6 until you see "IMP R02" appear - this is your off-peak screen.
2. A second later, you'll see eight digits appear, with "kWh" towards the bottom right of the screen. You'll only need to take the first 7 digits when taking each of these readings (i.e. nothing after the decimal place).
3. These are your peak and off peak readings.



For a smart gas meter, do the following:

1. Press 9 on the keypad.

2. The word “VOLUME” will show on the screen.
3. Your gas reading, in cubic metres (m3) will appear.
4. Take the first five digits as your reading.

To take an export reading from a Secure SMETS1 smart meter do the following:

1. Press 9 on the keypad.
2. The words "EXP kWh" will appear on the screen.
3. Your reading will appear in kWh.
4. Take the first 7 digits – this is your reading.

To take an export reading from a Secure SMETS1 smart meter with 2-rates (including Economy 7):

1. Press 9 on the keypad until you see 'EXP kWh'
2. Your reading will appear in kWh.
3. Take the first 7 digits – this is your reading.

SMETS1 first-generation smart meter

If you have a SMETS1 meter that was installed before 2018 but **doesn't have a Secure™ logo on the front**, we can't take automatic readings at the moment. We're working to change this, but in the meantime, here's how to take a manual reading:



If your meter has A and B buttons:

1. Press the A button.
2. Keep on pressing this until you get to “TOTAL ACT IMPORT”.
3. The number shown below this is your meter reading.



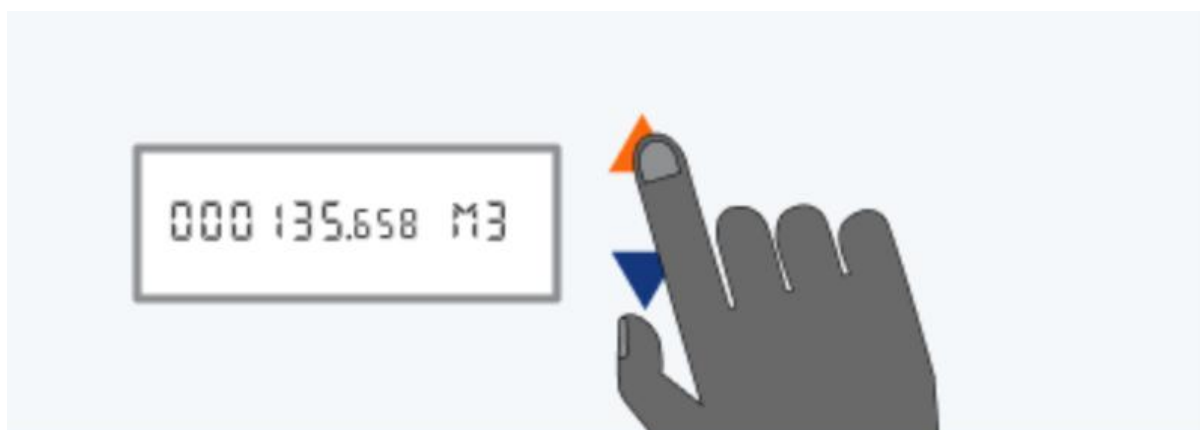
If your meter has a green A and a white B button:

1. Press and hold the green A button for at least 2 seconds.
2. Press A again and again to cycle through the displays.
3. The first row of numbers you'll see is your meter reading.



If your meter has three unmarked buttons:

1. Press the middle button.
2. The number shown below "IMP" is your meter reading.



If your meter has an orange button and a blue button:

1. Press the orange button.
2. You'll see a row of numbers followed by “KWH”, this is your reading.



If your meter has two buttons marked Reconnect and Display Select:

1. Press the “Display” or “Display Select” button.
2. Keep pressing until it scrolls through a number followed by kWh, this is your reading.

SMETS2 smart meters - latest models

If you're switching to Octopus and already have a second generation (SMETS2) smart meter, we'll soon be able to connect to your meter and take readings automatically, but your very first reading needs to be sent manually.

There are a few different brands of SMETS2 meter – you'll be able to tell which one yours is based on the logo.

Below, we explain how to take a manual meter reading from the most common types of SMETS2 meters. If you aren't sure whether you have a SMETS2 meter, or think you have a SMETS2 meter but can't find it on this list, [get in touch](#).

Secure SMETS2 electricity meter (Liberty 101):



- Press 6 on the keypad.
- You'll see your Active Import screen "IMP R01" appear on the screen.
- Wait a moment – then eight digits will appear, followed by "kWh" towards the bottom right of the screen.
- You'll only need to look at the first 7 digits when taking each of these readings (nothing after the decimal place, for example, 0014821.6 would be 14821).

To take a two-rate reading from your Secure SMETS2 meter:

- Take your peak rate as above (IMP R01), and then continue to press 6 until you see "IMP R02" appear - this is your off-peak screen.
- A second later, you'll see eight digits appear, with "kWh" towards the bottom right of the screen. You'll only need to take the first 7 digits when taking each of these readings (i.e. nothing after the decimal place).

To take your export reading from your Secure SMETS2:

1. Press 9 on the keypad until you see 'EXP kWh'
2. Your reading will appear in kWh.
3. Take the first 7 digits – this is your reading.

Secure SMETS2 electricity Meter (7-terminal Liberty 116):



Taking a manual reading from a 7 terminal Secure Liberty 116 depends on how many registers are on each of your MPANs (electricity meter points).

A 7 terminal meter will have two MPANs - a primary MPAN, and a secondary MPAN.

- To begin, press 6 on the keypad.
- The display will cycle through different screens, depending on the number of registers on each MPAN, you will need to look for a different reading.

Each reading will be followed by "kWh" on the right of the screen.

- **Primary MPAN, register 01:** IMPORT REGISTER-E1-01
- **Primary MPAN, register 02:** IMPORT REGISTER-E1-02
- **Secondary MPAN, register 01:** IMPORT REGISTER-E2-01
- **Secondary MPAN, register 02:** IMPORT REGISTER-E2-02

In most cases, there will only be 1 register on either MPAN, so only the E1-**01** & E2-**01** readings will be required.

- E1 = first element (primary MPAN)
- E2 = second element (secondary MPAN)



If there is a second register on either MPAN, you are looking for the E1-**02** or E2-**02** reading on the meter.

Aclara SMETS2 electricity Meter:



1. Press A to wake up the screen.
2. Continue to press 'A' to cycle through the different options until you see 'Total Active Import'.
3. Once you get to this option, you should be able to see your electricity reading.

To take an export reading from your Aclara SMETS2 electricity meter:

4. Press the B button to wake the screen up.
5. After the screen lights up, press the B button several times until you see a message that starts with either 'Total' or 'TOU'.
6. Press the A button several times until you see 'Total Active Export' - this screen will show your export reading in kWh.

Aclara SMETS2 gas meter



1. Press the middle button once to wake up the screen. This should automatically reveal your gas reading.

Landis and Gyr SMETS2 meters:



Landis and Gyr SMETS2 meters:

1. Press 'B' to light the screen up. You should be given the option for a meter boost.
2. Press 'A' to select 'No', and then you should be able to see your electricity reading.

To take two rate meter readings from your Landis and Gyr SMETS2 electricity meter:

1. The screen will start showing your first (R01) reading
2. Press B to light up the screen
3. Hold B for 5-10 seconds.
4. Press A to move to your second (R02) reading

5. Press A again to move back to R01
6. To see R02 again, hold B, then press A to swap between the reads again

To take an export reading from your Landis and Gyr SMETS2 electricity meter:

Your Landis + Gyr smart meter will have either:

1. Two equal sized green A and grey B buttons, to the right of the screen
2. A bigger green A button to the right of the screen, and a smaller black B button underneath the screen

If your meter has equal sized A and B buttons:

- Press the A button to get to the screen that says 'Credit mode bal'.
- Press and hold the A button for around 2 seconds, until the screen shows the time.
- Press the A button several more times to cycle through the meter's screens until you see your 'Total Act Export' reading in kWh.

If your meter has a larger green A button and a smaller black B button:

- Press and hold the A button until the time appears.
- Press the A button several more times to cycle through the meter's screens until you see your 'Total Act Export' reading in kWh.



Landis and Gyr Smets2 gas meter:

1. Press either 'A' or 'B' to wake up the screen.
2. This should automatically come up with your gas reading.



ELSTER/Honeywell AS302P SMETS2 meter:

1. First locate the two grey buttons on the right side of the display.
2. Press the top button “A” to wake up the display backlight and display the ‘General’ menu
3. Push the bottom button “B” to scroll through menu options: ‘General’, then ‘Boost’, and then ‘Registers’ menus will be displayed
4. Select the ‘Registers’ menu by pressing button A
5. Push button B to scroll through menu options: ‘Cumulative’, then ‘Rates in Use’, and then ‘Rates 1-48’ menus will be displayed
6. Select the ‘Rates 1-48’ menu by pressing button A

7. Use the push button B to scroll through menu options: 'Imp. R1' and select by pressing button A. This is your single rate meter reading

To take two rate meter readings from your ELSTER/Honeywell AS302P SMETS2 electricity meter:

- Press the top button "A" to wake up the display backlight and display the 'General' menu
- Push the bottom button "B" to scroll through menu options: 'General', then 'Boost', and then 'Registers' menus will be displayed
- Select the 'Registers' menu by pressing button A
- Push button B to scroll through menu options: 'Cumulative', then 'Rates in Use', and then 'Rates 1-48' menus will be displayed
- Select the 'Rates 1-48' menu by pressing button A
- Use the push button B to scroll through menu options: 'Imp. R1' then 'Imp. R2' and select by pressing button A. This is your two rate meter reading

To take an export reading from your ELSTER/Honeywell AS302P SMETS2 electricity meter:

- Press the top button "A" to wake up the display backlight and display the 'General' menu
- Push the bottom button "B" to scroll through menu options: 'General', then 'Boost', and then 'Registers' menus will be displayed
- Select the 'Registers' menu by pressing button A
- Push button B to scroll through menu options: 'Cumulative'
- Select the 'Cumulative' menu by pressing button A. It should show your 'Import'
- Push button B to scroll through menu options until you see 'Export' in kWh. This 'Cum. Exp.' figure is your solar export reading



EDMI SMETS2 electric meter:

Your EDM ES-10B electricity meter should auto-display your meter reading on the main screen (It will revert back to this screen if you do not press any buttons 1 minute).

To take two rate meter readings from your EDM ES-10B electricity meter:

1. Hold OK until it enters the 'Main Menu', you will see 'Billing' appear
2. Hold OK to enter the 'Billing' sub-menu
3. Using the arrows, scroll to 'Advanced' (2 pushes of the > button)
4. Hold OK to enter the 'Advanced' sub-menu, you will see 'TOUmatrix' appear
5. Hold OK to enter the 'TOUmatrix' sub-menu, you will see 'RATE1' appear
6. Use the arrows to cycle the rates you need to submit (Rate 1, Rate 2, ...)



EDMI SMETS2 gas meter:

Your EDM gas meter should auto-display your meter readings. If the screen has gone to sleep:

1. Press the button on the right to wake up the meter screen.
2. You should see the words 'Consumption in M³', and a number which is your meter reading.
3. The display will automatically cycle through other screens, but this first one is your reading.



Kaifa MA120 SMETS2 Electric Meter:

This meter does not require 'waking up' and uses a default auto scroll mode, cycling through its four screens. It will cycle through to the screen with your meter reading on automatically.

To take [two rate meter readings](#) from your Kaifa SMETS2 electricity meter:

- Press the top button (K1) to enter the menu system.
- With the arrow next to General Display, press and hold the top button (K1).
- Then press the bottom button (K2) to scroll down to Tariff Matrix. With the arrow next to Tariff Matrix, press and hold the top button (K1).
- With the arrow next to TOU Register, press and hold the top button (K1). T01 shows the total for R1, T02 shows the total for R2. T03 and 4 shows the unused Rate band.

To take an export reading from your Kaifa SMETS2 electricity meter:

- Your meter will automatically switch between 4 different screens - you don't need to push any buttons.
- Your export reading is on the screen that shows '-A value' in kWh.



Flonidan G4SZV SMETS2 gas meter:

1. When reading your Flonidan smart gas meter, your meter reading should be displayed automatically on the default screen.
2. It should be a number preceded by a large 'V' and followed by 'm3' If you have cycled off that screen.
3. You can use the 'left' and 'centre' push buttons beneath the screen to cycle back to it.



G4 Metrix GWi smart electronic gas meter:

1. Press the right-hand side button twice in quick succession to access the manual scroll sequence.
2. Windows '02' displays the meter reading



Honeywell/Elster SMETS2 Gas Meter:

The reading will be on the screen, if the display has gone to sleep mode, press any button to get the reading which will be shown on the display.



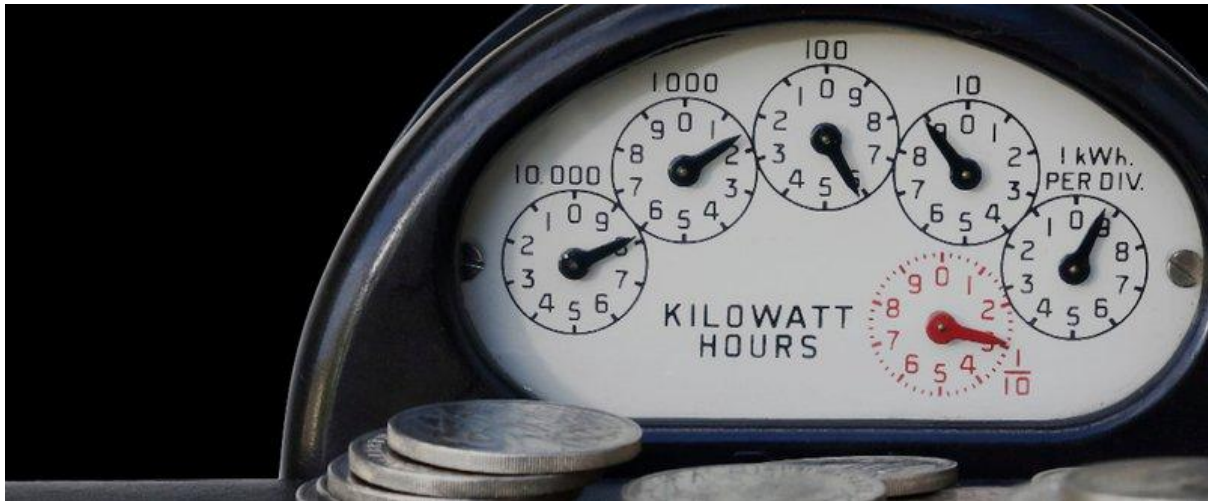
If you have a generation meter:

Be careful not to mistake your [generation meter](#) for your standard smart meter. We don't want these types of readings submitted accidentally in place of your actual billable smart meter readings.

Not everyone will have a generation meter - these are more most usual when you have a [Feed-in-Tariff](#) and they record the energy you generate.

If you don't have one of these, you don't need to worry.

Traditional meters



How to read a traditional analogue meter

Electricity Meters

Digital single meter

Looks like this:



How to read:

Write down the five numbers as they appear. **Ignore the red one.**

Digital dual meter

Looks like this:



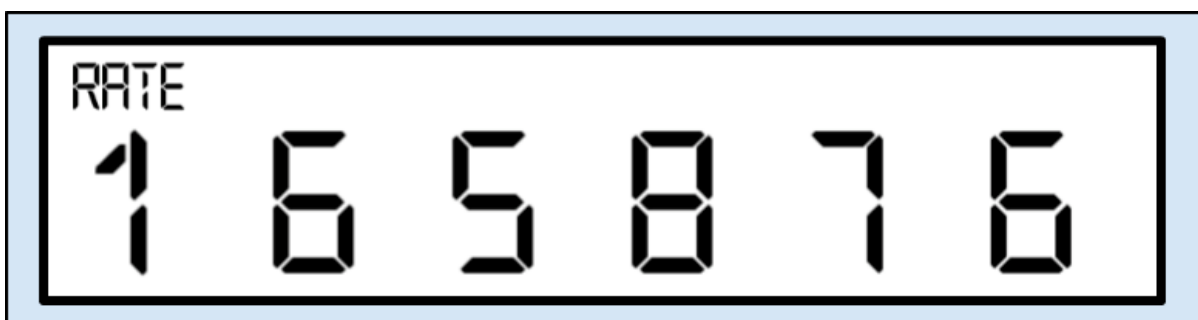
This is for those of you on two energy rates for different times of the day. The cheaper one is on top.

How to read:

Write down the five numbers as they appear, **ignoring the red ones.**

Digital dual meter (single display)

Looks like this:



Some dual meters have a single display where you might have to press a button to view each rate.

How to read:

1. Write down the numbers as they appear.
2. Press the button to see the next reading, then write that down too.

Dial meter

Looks like this:



Here you'll see five dials, each with numbers 0 to 9. There may be a sixth dial on the right, sometimes in red, or with 1/10 next to it – ignore this.

How to read:

1. Write down the numbers the pointer has just passed, from left to right.
2. If the pointer lies exactly on any number, underline it (in the above example, you would underline the 4).
3. Now, look at your five numbers. For any that are underlined, look at the number following it – if it's between 9 and 0, reduce your underlined number by one. The above example would therefore be 1 3 9 7 0.

Gas

Like electricity, there are a few different types of gas meter, but they're all fairly simple to read.

Digital imperial meter

Looks like this:

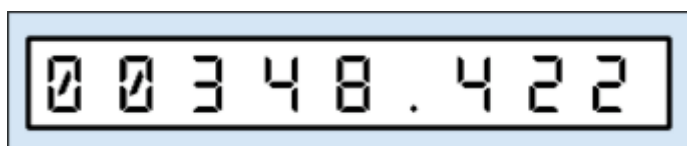


How to read:

Write down the first four numbers as they appear. **Ignore the red ones.**

Digital metric meter

Looks like this:



How to read:

Write down the first five numbers as they appear – **ignore the numbers after the decimal point** (sometimes in red).

Dial meter

Looks like this:

